



architecture
portfolio
selected works

Shruti Deshpande

Index

Academic works

National school of Drama

Commercial complex

Landscape design- urban courtyard

Professional work

Villas at Marna, Goa

Villa at Parra, Goa

Additional Works

Competitions

College events

Graphic designing

National School of Drama

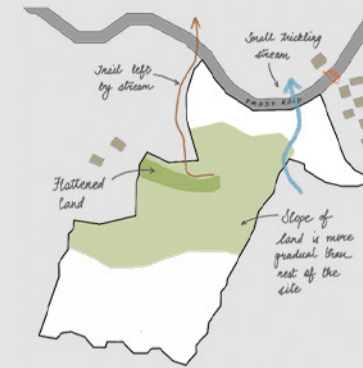
Thesis 2022

The National School of Drama is one of the foremost theatre training institutions in the world and the only one of its kind in India. A new campus has been proposed by the government in Sikkim near Gangtok.

The site is resplendent with natural beauty with the steep contours adding to the dramatic effect. The concept of the design was to enhance this existing drama, not disturb what has been since so long.

The location was deliberately chosen to allow minimum distractions to the students and to envision the school as a modern gurukul. There is an existing 9m wide road on the north of the site.

In 2019, the Government allotted a 4.5 acre site roughly 18km away from the current site, outside Gangtok city. The same site has been selected to propose a facility for the new center.

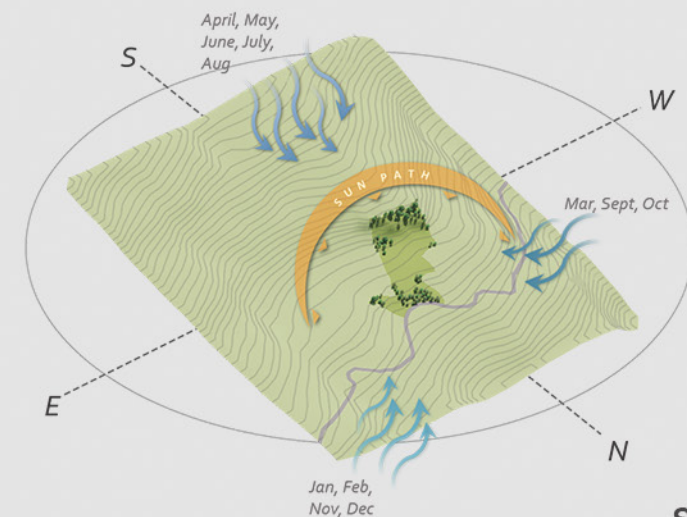


The central region of the site has a relatively gradual slope of 6.825% or 3.9 degrees. A portion of the site was already flattened for the ground breaking ceremony.



Minimum development surrounding the site has kept noise pollution to minimum

Most sounds are from birds, wind, rustling of leaves, rainfall



Site analysis



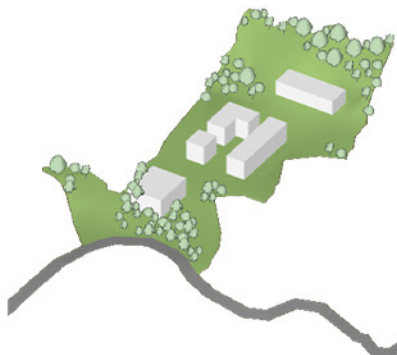
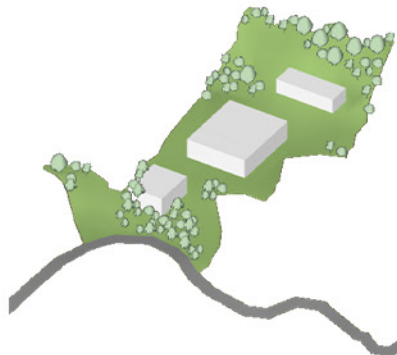
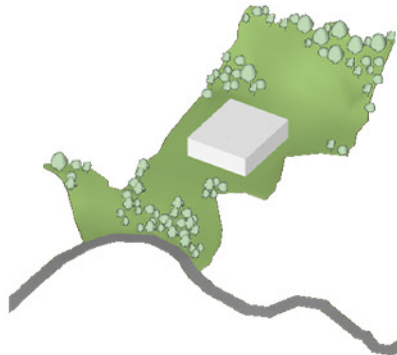
- Medium slope- possible to build
- Gradual slope- possible to build
- Steep slope- difficult to build



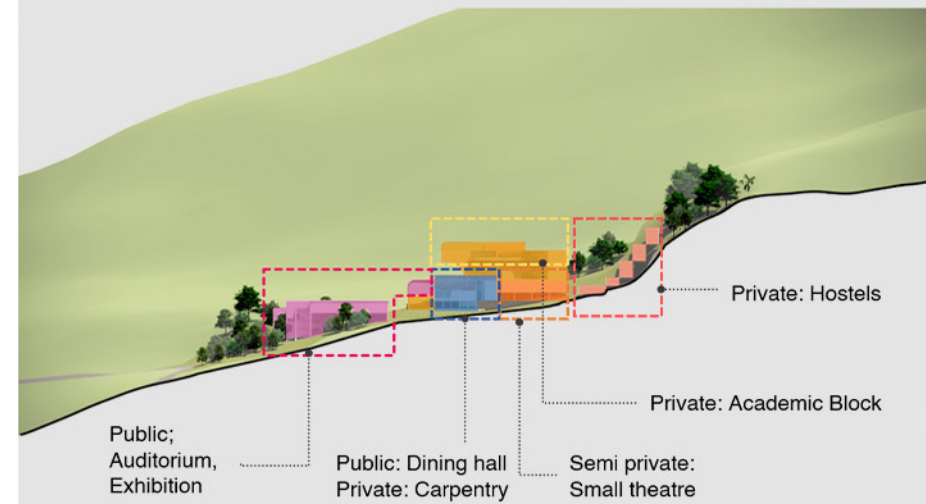
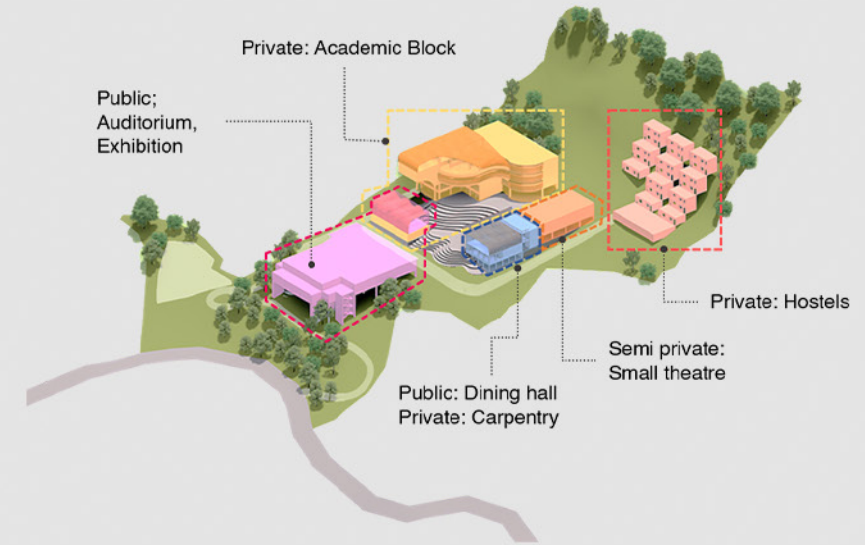
Site Zoning



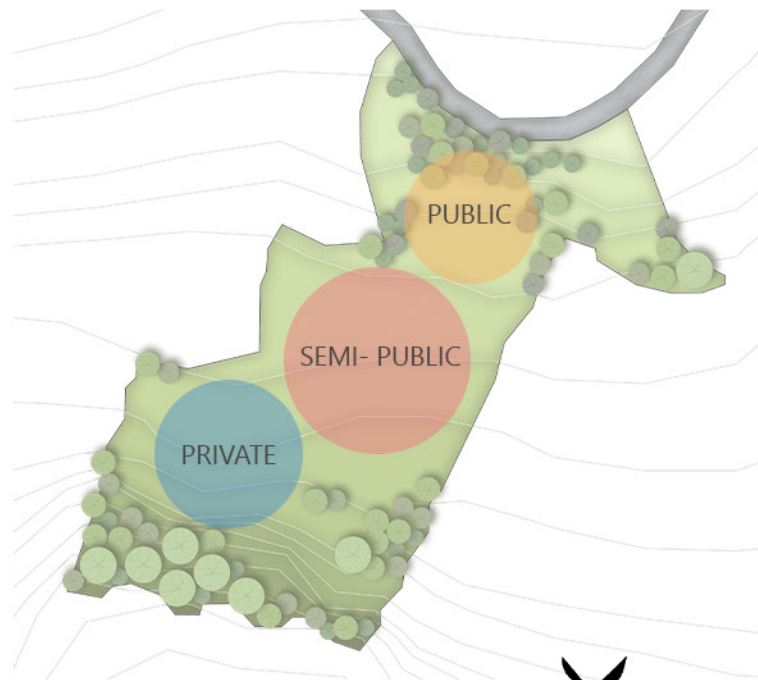
- Public
- Semi- public
- Private- educational
- Private- residence



Design evolution- Placement of building blocks on site



Massing and zoning



Zoning



Site plan



Site section



- LEGEND
1. CARPENTRY WORKSHOP
 2. STORAGE
 3. GUESTHOUSE

Carpentry workshop and Guesthouse



- LEGEND
1. CANTEN KITCHEN
 2. CANTEN SEATING
 3. MULTIPURPOSE HALL
 4. MUSIC DEPARTMENT

Dining hall, multipurpose hall and music department



- LEGEND
1. DECK
 2. SMALL THEATRE
 3. EXHIBITION PAVILLION
 4. RECEPTION
 5. FACULTY CABIN
 6. MEETING ROOM

Deck, small theatre, exhibition pavillion and Academic block gr. fl.



- LEGEND
1. ADMIN AND ACCOUNTS
 2. DIRECTOR'S CABIN
 3. PANTRY
 4. CONFERENCE ROOM
 5. FACULTY ROOM
 6. SPILLOUT AREA

Academic block first flr.



- LEGEND
1. MAKE-UP STUDIO
 2. COSTUME DEPARTMENT
 - 2.a. TRIAL AREA
 - 2.b. STORAGE
 - 2.c. DESIGN STUDIO
 - 2.d. TAILORING UNIT
 3. CLASSROOM
 4. STORAGE
 5. AMPHITHEATRE

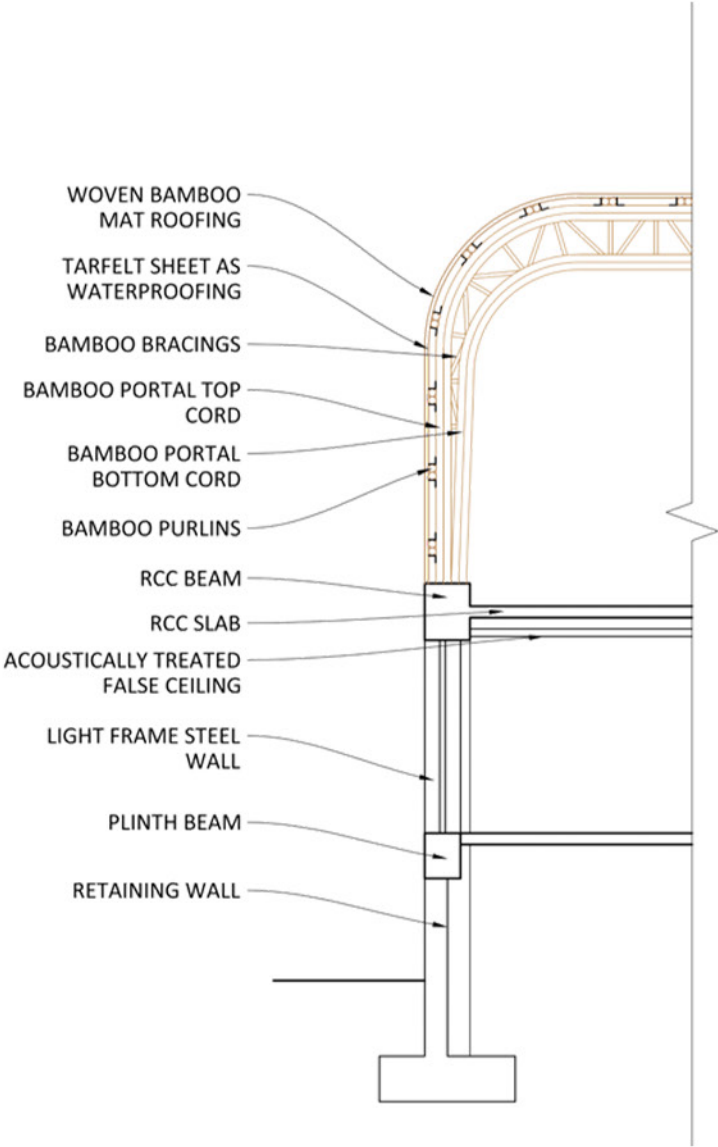
Academic block second flr.



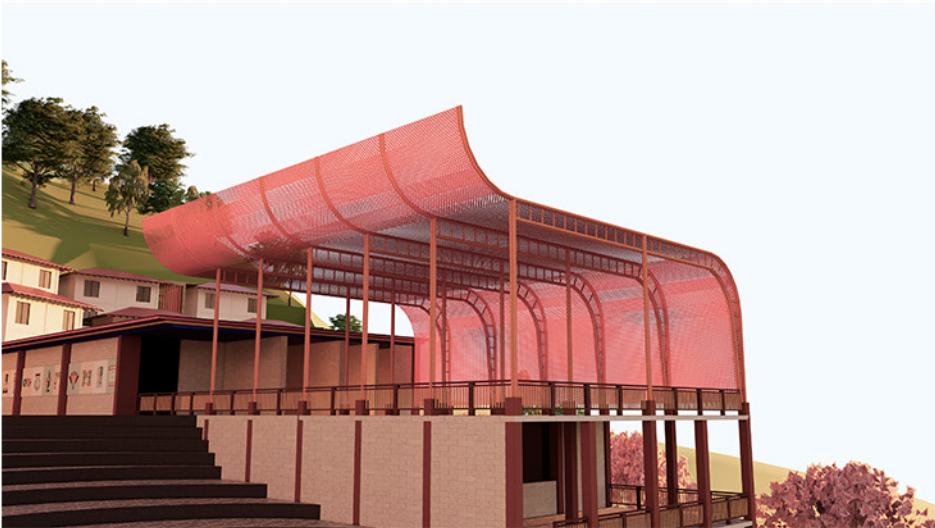
- LEGEND
1. MOVEMENT STUDIO
 2. PHOTOGRAPHY LAB
 - 2.a. SHOOTING AREA
 - 2.b. DEVELOPMENT LAB
 3. LIBRARY
 4. AV SECTION
 5. OUTDOOR READING SPACE
 6. TERRACE

Academic block third flr.

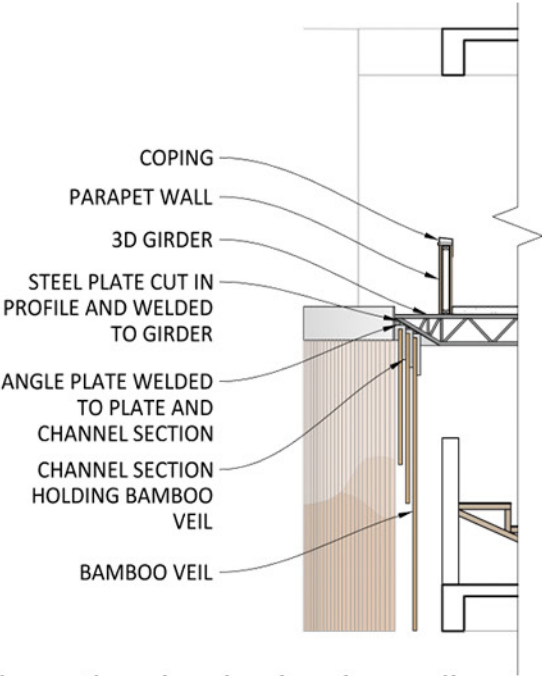
Building Envelope design



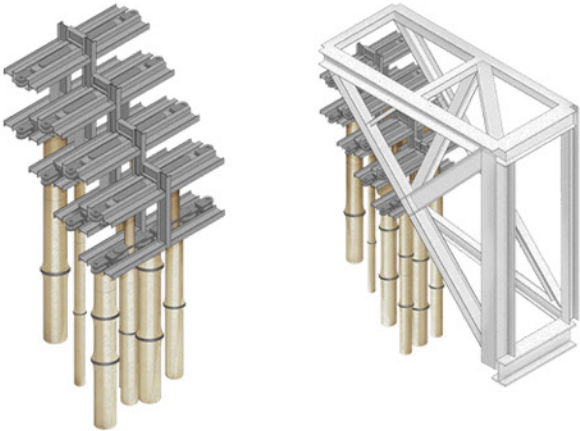
Strip section through bamboo pavilion and music department



Bamboo pavilion



Strip section showing bamboo veil facade



Detail of channel holding bamboo culms

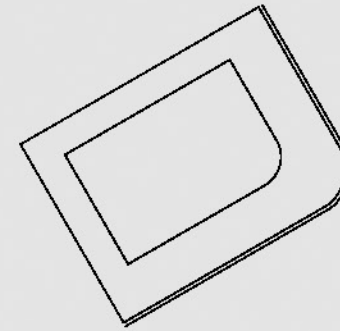
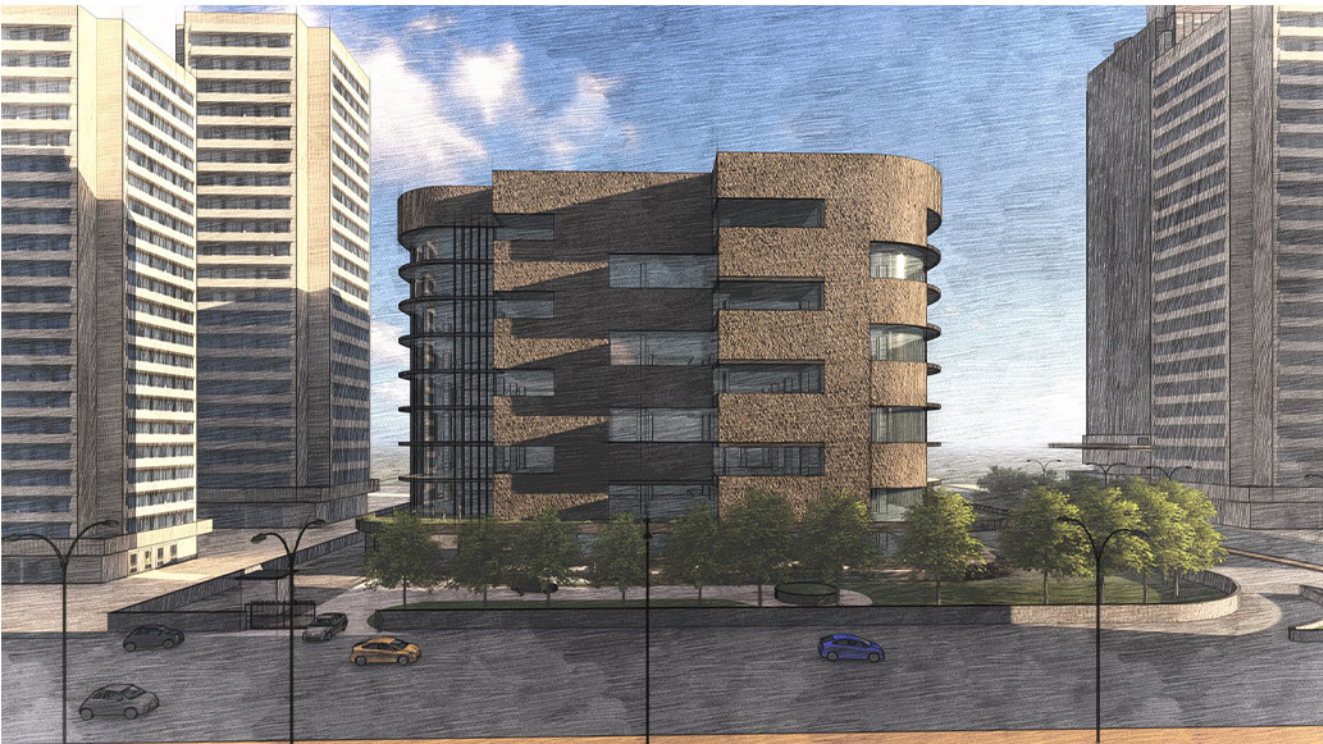
View from internal road



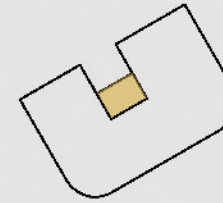
Commercial Complex Mumbai

With the emergence of start-ups and free lancing ventures, the need for affordable and flexible workplaces arose. This demanded the creation of co-working spaces which could provide basic amenities to the benefactors as per their membership plans. Such an arrangement is beneficial for individual users as well as larger groups who wish for a flexible and customizable workplace. Alongwith office spaces, the building has restaurants, cafes, a lounge, shops and a studio space. The complex thus, becomes a mixed used space.

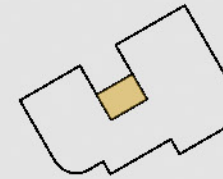
Architectural design studio 2019



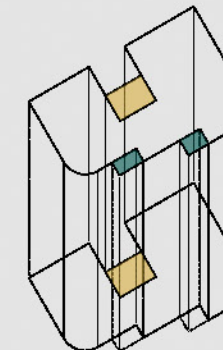
The basic form of the building is rectangular while mirroring the prominent curve of the site.



The major service core of the building is on the rear facade.



Creating offsets on the front elevation, facing the main road.



Creating two slightly different floor plates such that alternate floors have terraces. These terraces serve as interactive breakout spaces, promoting conversation and dialogue among a versatile group of



The alternating floor plates create open spaces which function as breakout zones. The access such to such places promotes creativity and productivity in employees.

The terraces also act as a platform for exchange of ideas and innovation alongwith recreation.



Sunshading devices have been implemented to provide comfortable working conditions within the building. The main glass facade is overlayed by vertical louvres on the east and west which creates a play of light and shadows.

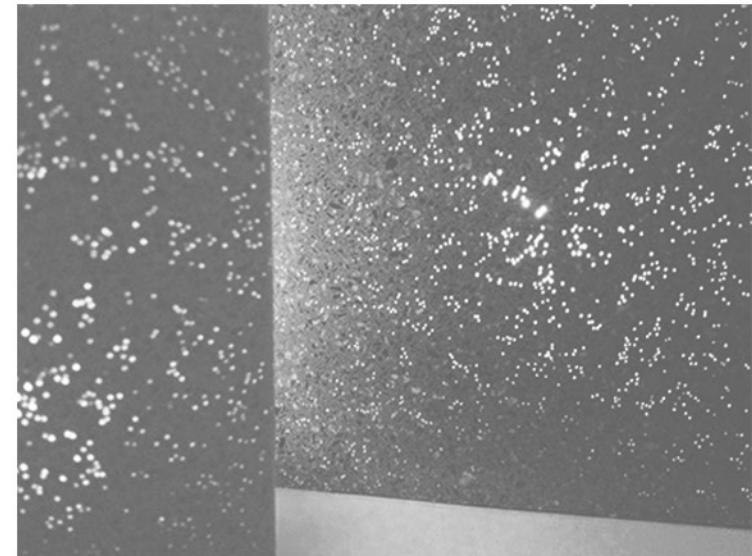


The ground floor has building services like the administrative office, storage rooms, a loading-unloading dock and a service yard.

There is outdoor seating overlooking the lawn for

- SHOP
- RESTAURANT
- OFFICE
- STORAGE
- PASSAGE
- SERVICE CORE

site plan ▲



The southern facade is shaded by light emitting concrete panels. The panels are composed of optic fibres embedded into the concrete. This results in a certain light pattern on the other surface, depending on the fiber structure.



Interaction of hardscape and soft scape



Patterns created by basic geometric shapes



Grass pyramids provide an element of verticality



Stone bench seats

Urban Courtyard Mumbai, Maharashtra

Landscape design studio 2019

The brief was to develop a triangular courtyard like space in the heart of the Fort area of Mumbai. The redeveloped space would function as a breakout space for the employees of the surrounding buildings. Taking the triangular shape of the site itself as a motif, an attempt was made to create visual interest through the use of patterns and use of different textures and materials. Given the small scale of the site, the motive was to create a simple scheme, uncomplicated by keeping the number of elements to a minimum. Bench style seats of stone, concrete seating platform under the shade of the existing trees and accessible grass pyramids make for interactive spaces for the users.



Site Layout



Section



Villas at Marna Goa

Ongoing professional project

The project is situated in Goa and is being built by a developer as a holiday home.

This luxury villa spirits one away to a realm of grounded, slow, and mindful living. Bohemian inspiration soars a compelling flight with the inception of the interiors with wood accents, cane, exposed concrete, and cues of nature bejewelling the home's tapestry.

The original plot was divided into 3 smaller plots and 3 villas were thus placed on the site.

Villa 1 and 2 are identical in design and Villa 3 facing the fields is the largest Villa.

The primary structural system for the villas is RCC construction. But the infill masonry as well as the final cladding of the villas is in Laterite stone- a locally sourced material.

I was responsible for working out staircase details, railing designs, roof edge details, swimming pool tile patterns, kitchen cabinets design and generating 3D views for the interior design works.

Apart from the above, I have been overseeing the execution at site and have been the face of the project from my firm.



Villa 3 living room



Villa 3 kitchen



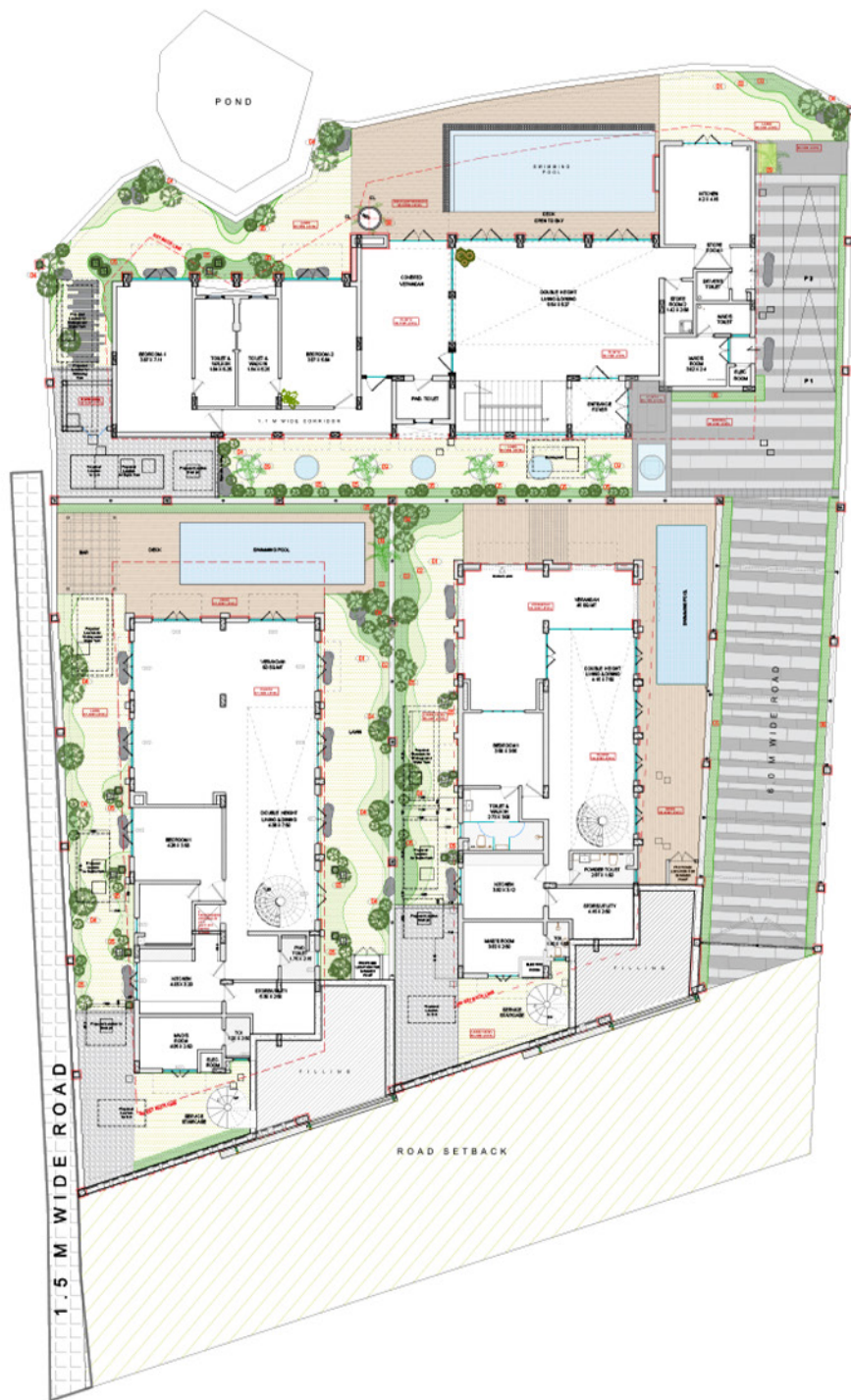
Villa 2 powder toilet



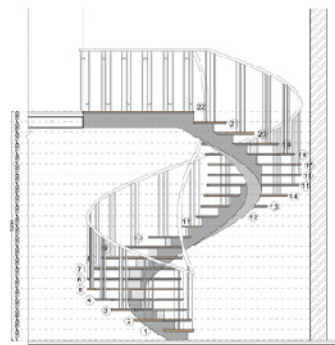
Villa 2 bedroom



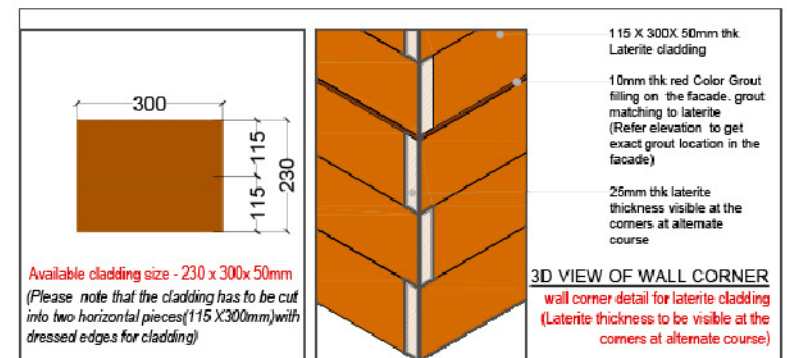
Villa 3 facade



Site plan



Spiral staircase design



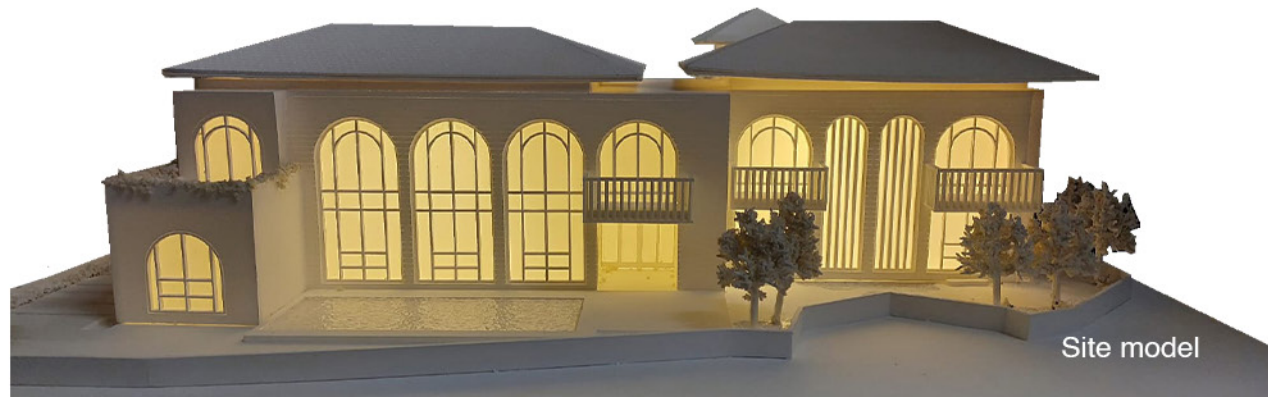
Laterite cladding detail



Spiral staircase executed



Laterite cladding executed on site



Site model

Villa at Parra Goa

Ongoing project

This capacious villa ushers the gravitas of Hacienda-style elements nestled in the heart of Goa, creating an oasis of immersive design.

The outside and inside dwell in a harmonious communion, united by raw materiality, doses of verdure, and a blueprint that makes room for shared and solitude-yearning moments.

I was part of the conceptualisation and planning process of the villa and the 3D visualisation.

Apart from the above, I have been overseeing the execution at site and have been the face of the project for my firm.



Swimming pool



Villa east facade



Verandah



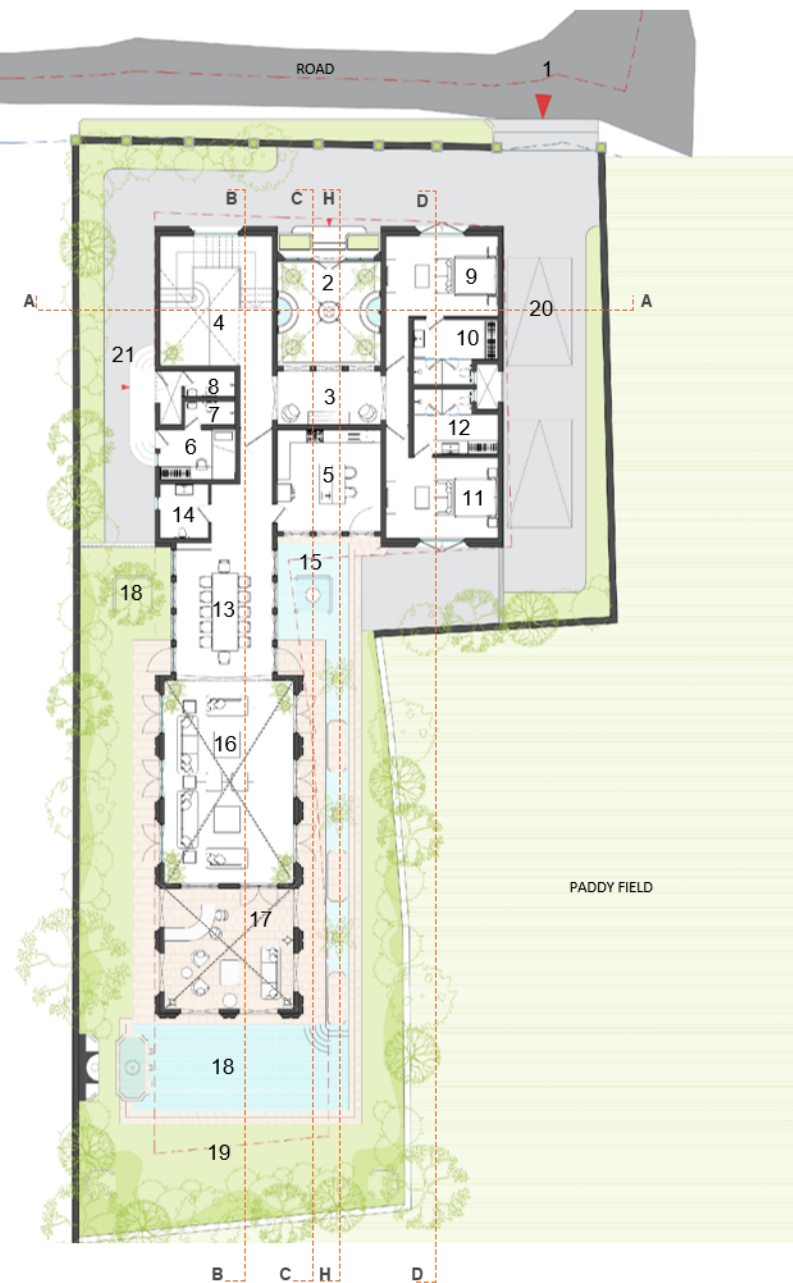
Villa rear facade



Terrace

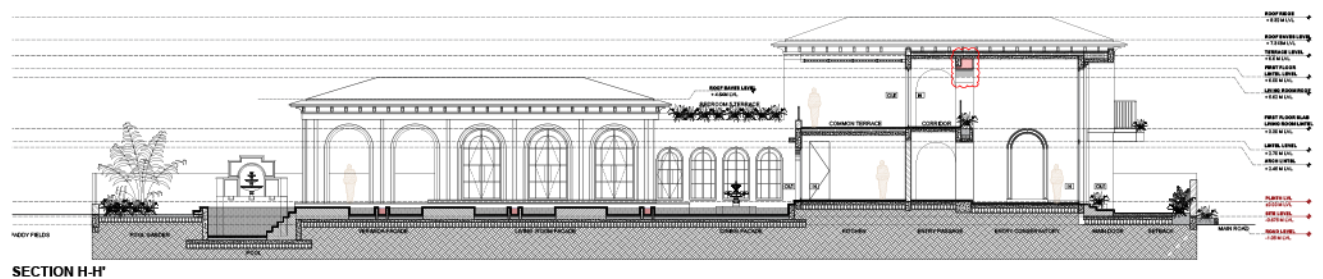
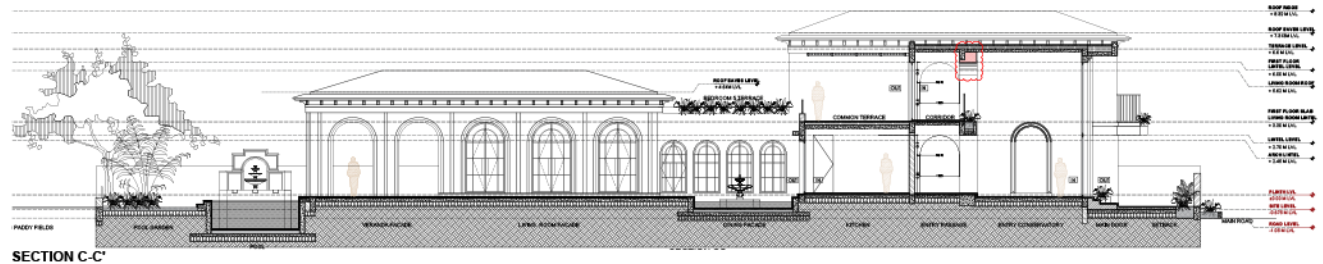
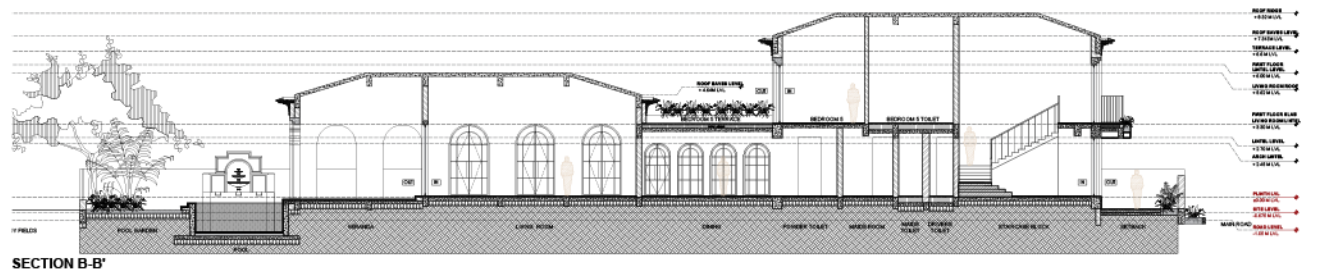


Villa front facade

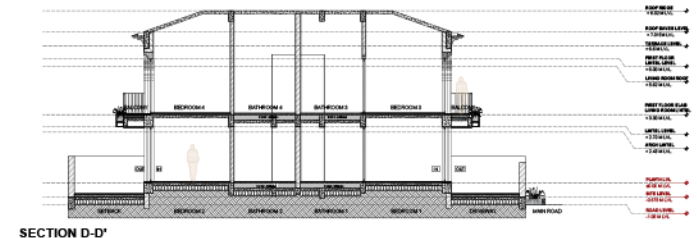
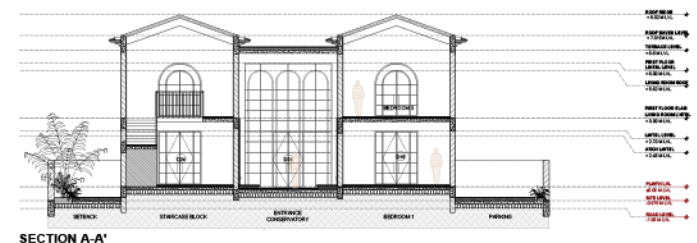


Site Plan

Professional work undertaken in a team
My role- Planning and 3D modelling. Currently involved in site execution.



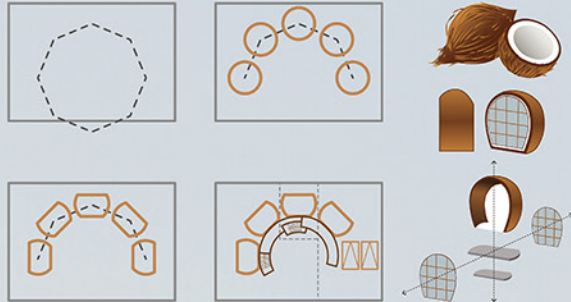
1. ENTRY FROM THE ROAD
2. CONSERVATORY : 15'-9" x 15'-9" / 4.81m x 4.81m
3. ENTRANCE FOYER : 25'-8" x 8'-2" / 7.82m x 2.50m
4. STAIRCASE : 19'-9" x 16'-5" / 6.03m x 5.00m
5. KITCHEN AND STOREROOM : 15'-9" x 15'-6" / 4.81m x 4.73m
6. MAID'S ROOM : 11'-4" x 7'-6" / 3.47 m X 2.3 m
7. MAID'S TOILET : 7'-6" x 3'-6" / 1.07 m X 2.3 m
8. DRIVERS TOILET : 7'-6" x 3'-11" / 1.2m x 2.3 m
9. BEDROOM 1 : 16'-6" x 16'-5" / 5.03m x 5.00m
10. BEDROOM 1 : BATHROOM : 12'-2 x 9'-10" / 3.72m x 3.00m
11. BEDROOM 2 : 19'-9" x 16'-5" / 6.03m x 5.00m
12. BEDROOM 2 : BATHROOM : 12'-2 x 9'-10" / 3.72m x 3.00m
13. DINING ROOM : 20'-1" x 14'-8" / 6.13m x 4.47m
14. POWDER ROOM : 8'-2" x 6'-8" / 2.50m x 2.03m
15. WATER FEATURE
16. LIVING ROOM : 29'-6" x 19'-7" / 9.00m x 5.97m
17. VERANDA : 19'-7" x 19'-5" / 5.97m x 5.93m
18. SWIMMING POOL : 32'-10" x 13'-0" / 10 m x 4.00m
19. LANDSCAPE GARDEN : 49'-6" x 21'-10" / 15.1m x 6.65m
20. PARKING
21. SERVANTS ENTRY



THE HOUSE 2.0

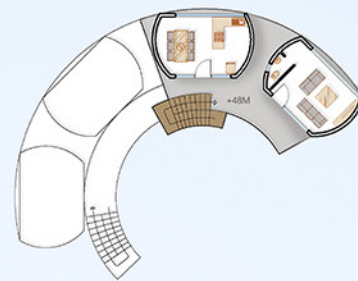
ARCHDAIS

TOP 50 ENTRY



Seeking inspiration from the nature around the house is an ode to the motifs of bamboo and coconut dotting the entire country of Indonesia.

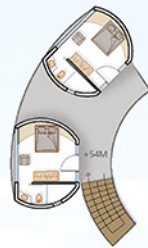
The coconut inspired units with bamboo as the building material, evoke warmth and security. The individual units give a sense of privacy but are tied together by the central courtyard. The dynamic roof of woven bamboo makes the internal passage interesting with the play of light and shadow.



SECOND FLOOR



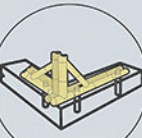
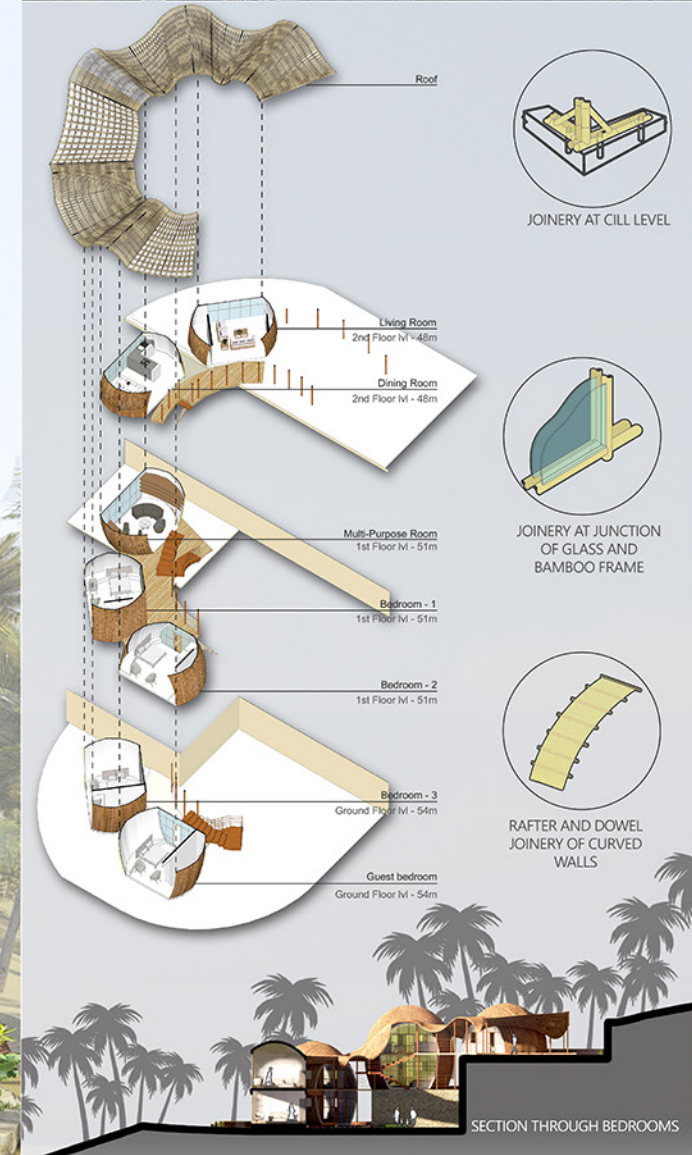
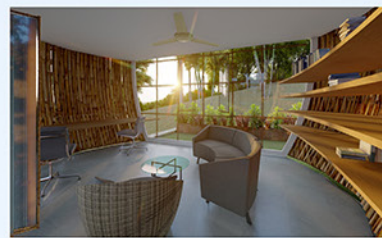
FIRST FLOOR



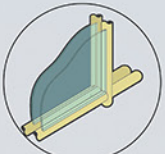
GROUND FLOOR

LEGEND

1. Garage
2. Living room
3. Dining/Kitchen
4. Study room
5. Bedroom 1
6. Bedroom 2
7. Bedroom 3
8. Guestroom



JOINERY AT CILL LEVEL



JOINERY AT JUNCTION OF GLASS AND BAMBOO FRAME



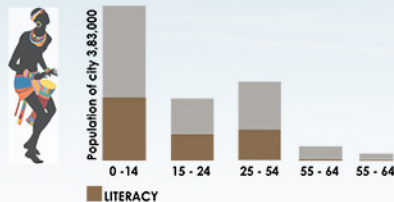
RAFTER AND DOWEL JOINERY OF CURVED WALLS

SECTION THROUGH BEDROOMS

RESCHOOL 2021

VOLUME ZERO

TOP 50 ENTRY



The Zahara school aims to bring a new lease of life to Niger's efforts in improving educational facilities while also trying to be something more than just a primary school. It also caters to the local communities needs and culture.



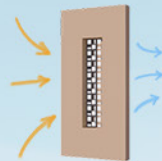
ZAHARA A BLOSSOM OF HOPE IN THE SAHARA

Education in Niger, as in other nations in the Sahelian region of Africa, faces challenges due to poverty and poor access to schools. Although education is compulsory between the ages of seven and fifteen, with primary and secondary school leading into optional higher education, Niger has one of the lowest literacy rates in the world.

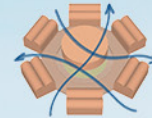
Historically centered in the lands of the Djerma people, Ouallam has important minorities of rural and urban Tuareg and Fula peoples. It is the main town of the rocky Sahel highlands called the Zarmaganda plateau, and is one of the traditional homes of the Djerma people. A market center, the town is also home to an agricultural research center of the INRAN.



A module of 5m X 8m was replicated to create 6 built spaces at the ground level which house 4 classrooms, an admin area, a canteen and a toilet block. The intermediate spaces act as break out zones with play area. The central courtyard is shaded by the upper floor which has the library, staff room and the principal's cabin. A tensile roof was fashioned to resemble a blooming flower, the titular Zahara in the school's name.



The geometric jali is a reflection of the local architecture and passively cools the interiors, protecting from the harsh desert winds.



The central courtyard as well as the spaces in between the rooms maintain cross ventilation



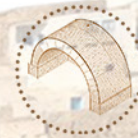
Barrel vault and a tensile membrane over it creates a double roof effect which insulates the space below

Locally available laterite stone has been used for walls. The tensile roof is made of colourful fabric.



Tensile roof connection detail at corner

Tensile roof connection detail between membrane and spanning member



Barrel vault roof stone shell detail



SECTION



GROUND FLOOR PLAN



FIRST FLOOR PLAN

FIRST FLOOR

Barrel Vault roof

Toilet (5 SQM)

Staff Room (25 SQM)

Library (35 SQM)

Principal's cabin (15 SQM)

GROUND FLOOR

Classroom (40 SQM)

Admin (20 SQM)

Toilet (20 SQM)

Canteen kitchen (40 SQM)



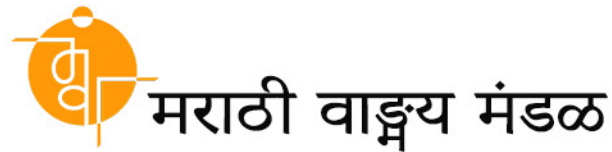
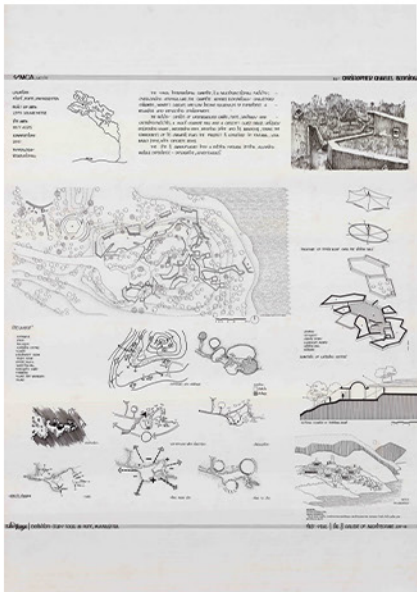
exhibitions



Pune- the city that blends the old with the new, historical to the core and while embracing modernity, has been put up together in an exhibition following the theme of Reflection.

The exhibition was a reflection of the evolution of the city Pune through its heritage, culture and architecture.

The exhibition was divided into three phases- heritage and culture, personal experience on the study tour and study of architects and their works. The entire exhibition comprises extensive research, photographic documents and hand rendered sheets in ink.



The Marathi Vangmay Mandal at the college organises an annual event. The event during the academic year 2019-2020 was titled *Gatha*.

Gatha aimed to explore the art of story-telling. A variety of competitions brought forward unique tales through the mediums of art, pictures and words.

The main event itself had dance performances, musical pieces and three plays- each portraying a different story and invoking a different experience and emotion for the audience.



UN-Settled

Being a Refugee in the Subcontinent

This exhibition under the guidance of Ar. prachi Metawala gave an in depth insight into the lives of redfugees in India.

It extensively mapped the journey and struggles faced by refugee migrants in the country through an interactive card game.

This game provided the players an experience of the life of a migrant with their progress determined by a variety of choices and chances of fate.

<p>BETWEEN SHADES OF GREY</p> <p>Writers Divita Rai & Prachi Metawala UN-Settled</p>		<p>1948 CHOICE</p> <p>A. You don't want to undertake any journey whilst carrying your unborn child. You stay back and protect your homes in W8 and G. (cd 85)</p> <p>B. You flee to C15 with your sister and her family, leaving behind the parents in W8 and G, to safeguard your properties. (cd 19)</p> <p>C. Whole family flees to C14, crossing two land borders, to find and reunite with your husband, Alzawj. (cd 7)</p> <p>Money :4100 u</p>	
<p>1948 CATASTROPHE</p> <p>A month back, a P' village massacre took place wherein over 200 people belonging to your ethnic group had been brutally murdered with the intention of J' group taking over the land.</p> <p>The british mandate that ruled your land has withdrawn its power and there is widespread apprehension and uncertainty regarding the legitimacy of your homes resulting in a huge exodus of the people from your group, including your neighbours. (cd 6)</p>	<p>1947 SL</p> <p>You are a 19 year old, 4 month pregnant woman of P' ethnicity. You work as a teacher in a school two blocks away.</p> <p>You live with your husband Alzawj's parents in G city.</p> <p>Alzawj, 25, is working for a petroleum company in D city in the neighboring C14.</p> <p>Money:5000 u</p>		
<p>C17 9</p>		<p>C17 5</p>	

graphic designing



पर्यावरण संरक्षण

The objective of Paryavaran Sanrakshan Gatividhi is to create awareness about the environment through various programs.

To bring positive change in the environment.

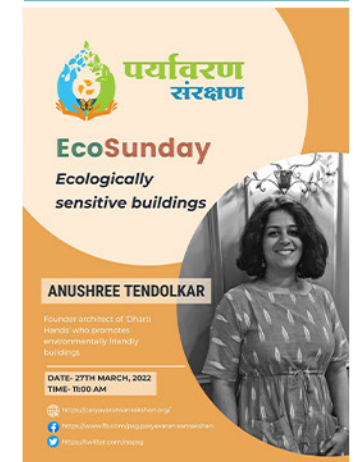
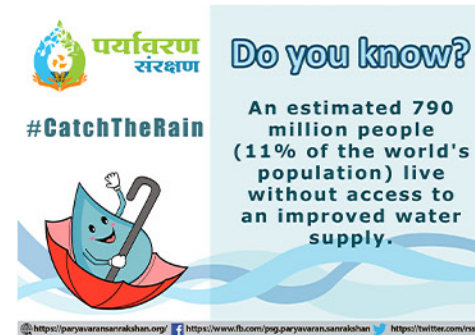
Planting trees, saving water and removing polythene are its undertakings.



Mascot for Ecobricks campaign



Mascot for Save water campaign





B/9 Koti Uddan CHS,
Akurli Cross Rd. No.1,
Kandivali (East),
Mumbai-400101



shrutid.1704@gmail.com



+919619496606